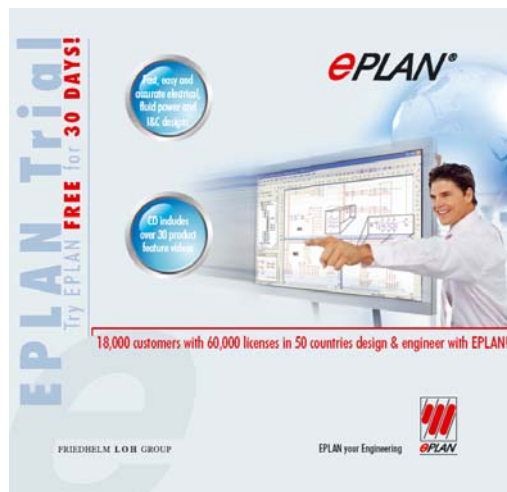




# EPLAN Trial

## Registration & Installation Instructions





## Copyright Information

Copyright 2008, EPLAN Software & Services LLC, Farmington Hills, Michigan. All rights reserved under U.S., international and universal copyright conventions. Published in the United States of America.

**In no event will EPLAN Software & Services LLC be responsible or liable for incidental or consequential damages resulting from the use or application of the materials in this document.**

Reproduction of the contents of this document, in whole or in part, without written permission of EPLAN Software & Services LLC is prohibited.

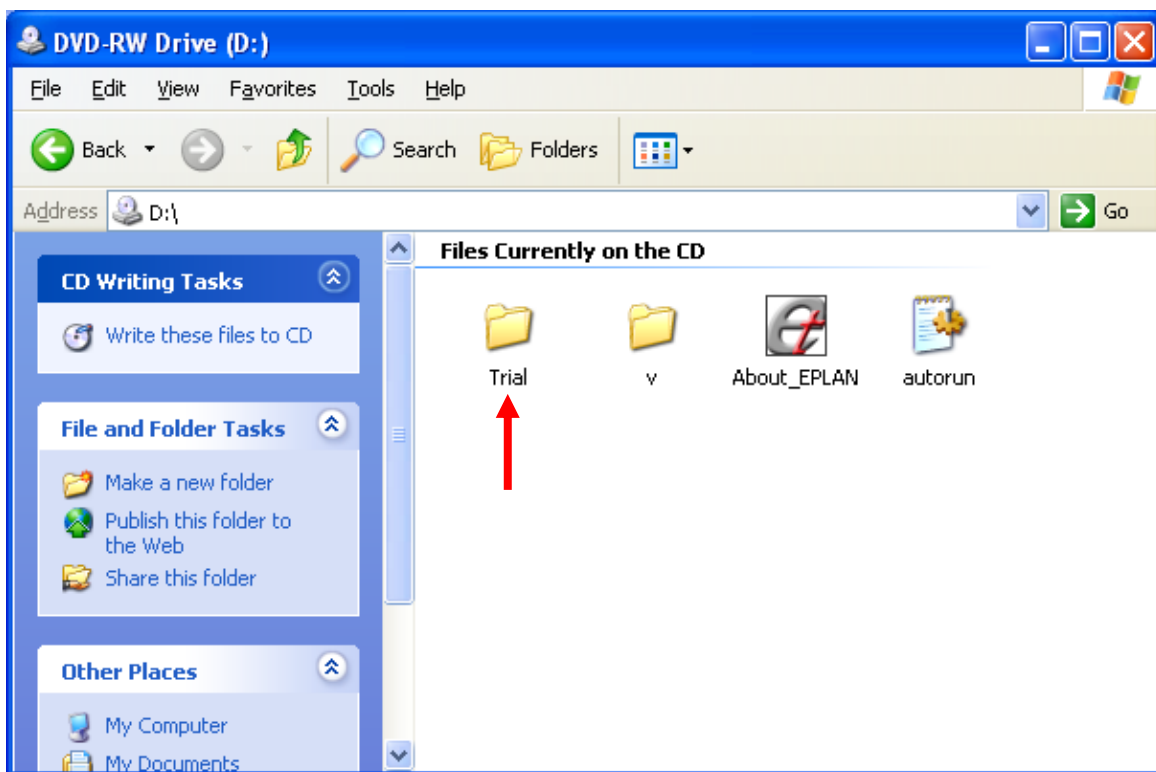
## Minimum System Requirements

- Microsoft® Windows® XP SP2 or Windows® Vista Enterprise, Business N, or Ultimate (32- or 64-bit editions). Windows® 2000 is not supported.
- Processor comparable to a Pentium 4 at 3 GHz
- 1 GByte memory/RAM
- 2 GByte free hard-disk space for program and data files
- Minimum 1024 x 768, or preferably 1280 x 1024, resolution monitor
- Internet connection for product activation



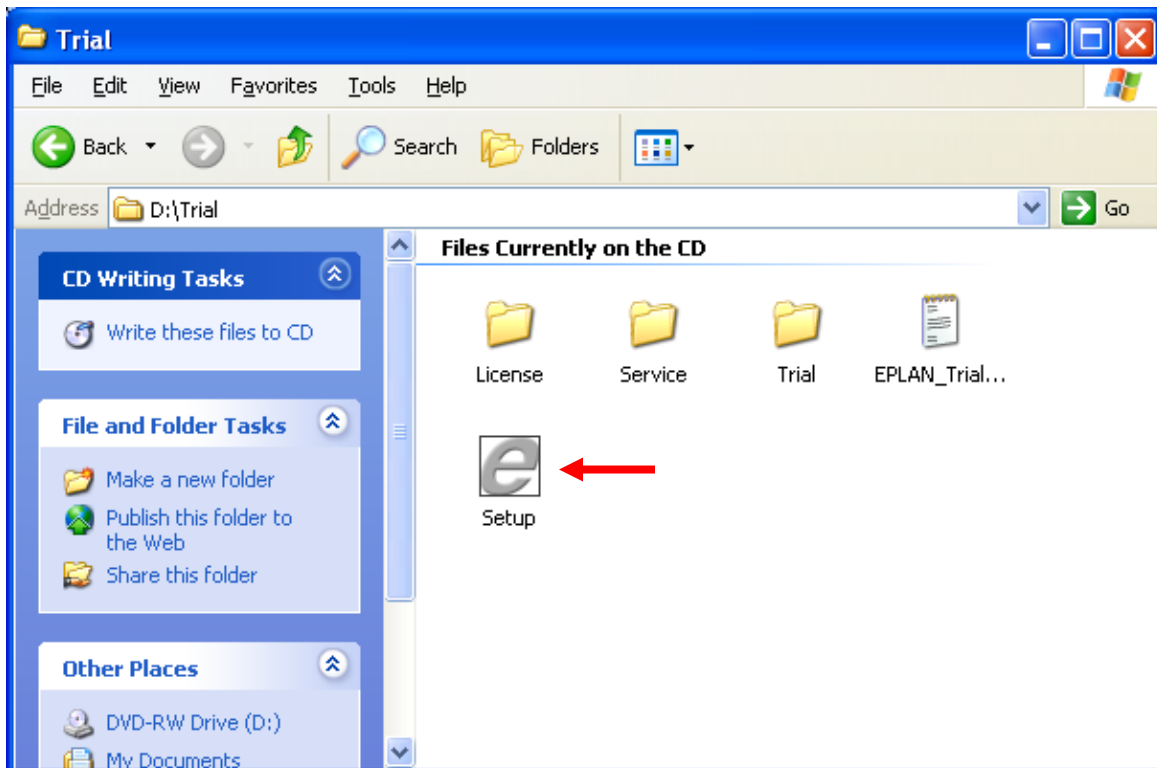
## Registration & Installation Instructions

- 1) Open the **Trial** folder in the EPLAN Trial CD's directory.



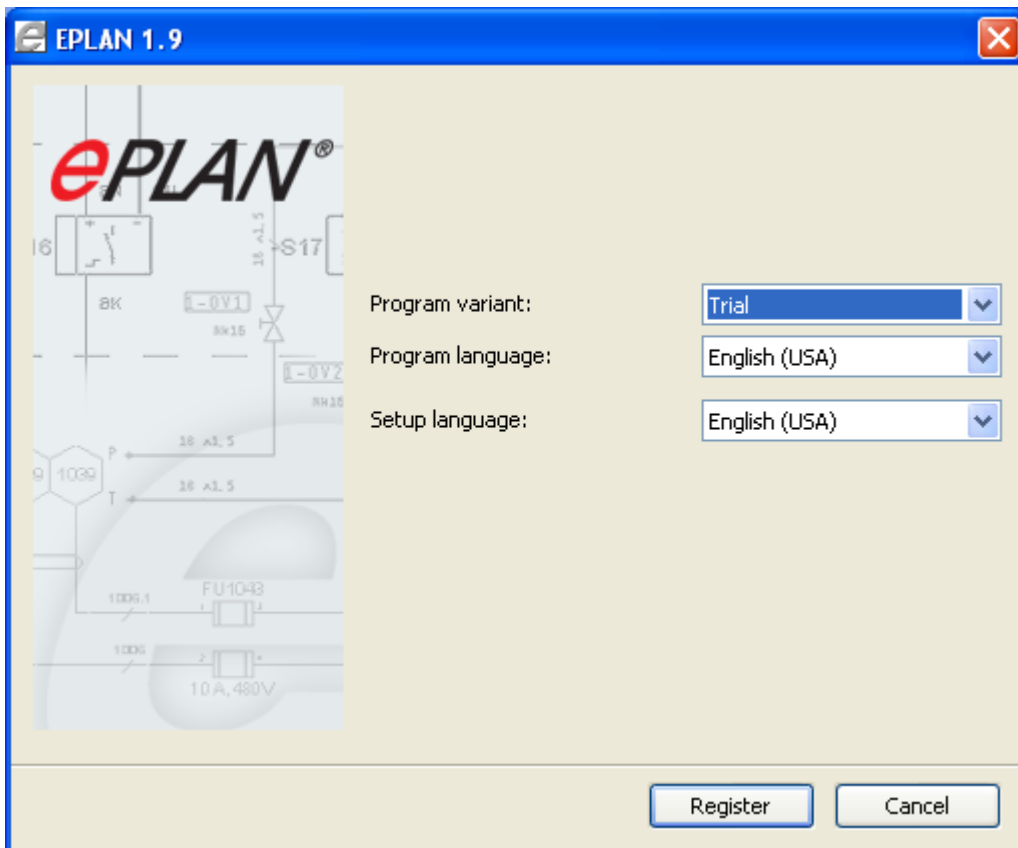


2) Run the **Setup.exe** file.



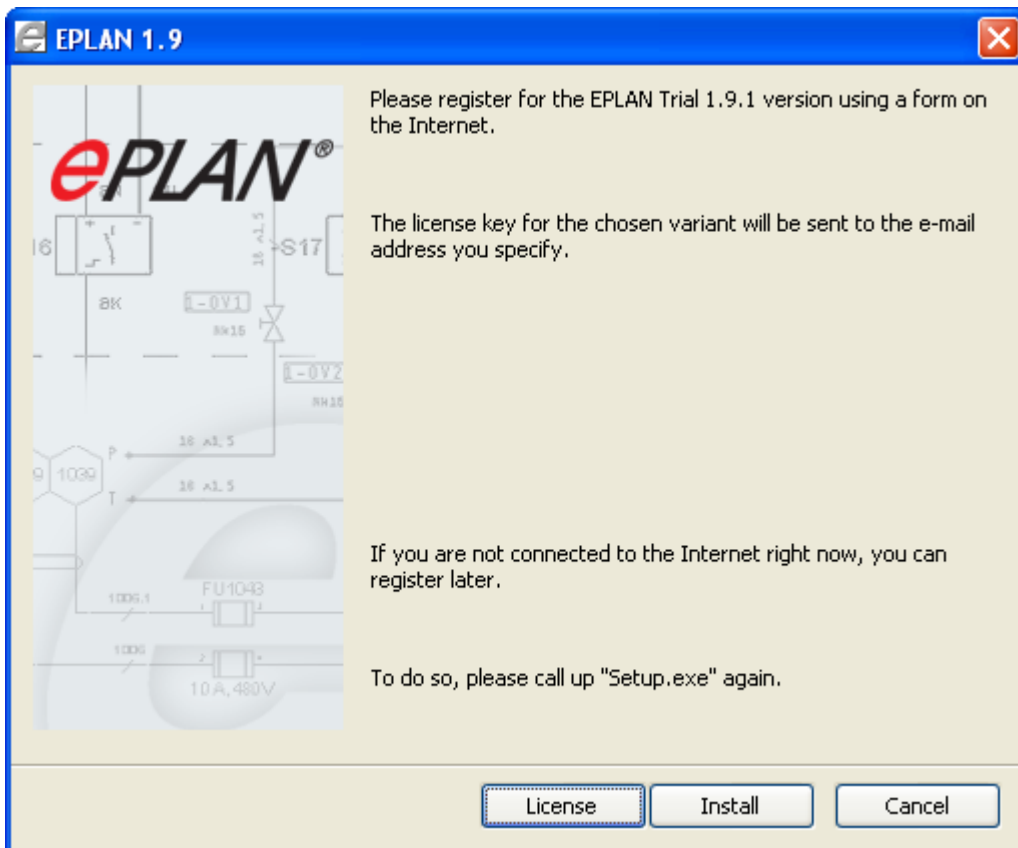


3) Click **Register**.





- 4) Make sure you are connected to the Internet and click **License** to register the software online.





5) Complete the online registration form and click **Send**.

**EPLAN Trial Registration**

Thank you for your interest in the EPLAN Trial version. To register your EPLAN Trial software, please complete the form below and click Send. If you have any questions or need assistance, please contact [webmaster@eplan.de](mailto:webmaster@eplan.de).

During the installation, the license key will be sent to the e-mail address you entered when registering. If you do not have internet access at this time, you can register via the Internet later by running Setup.exe again. The license key will then be e-mailed to you. When you run the program for the first time, enter this license key via the License button.

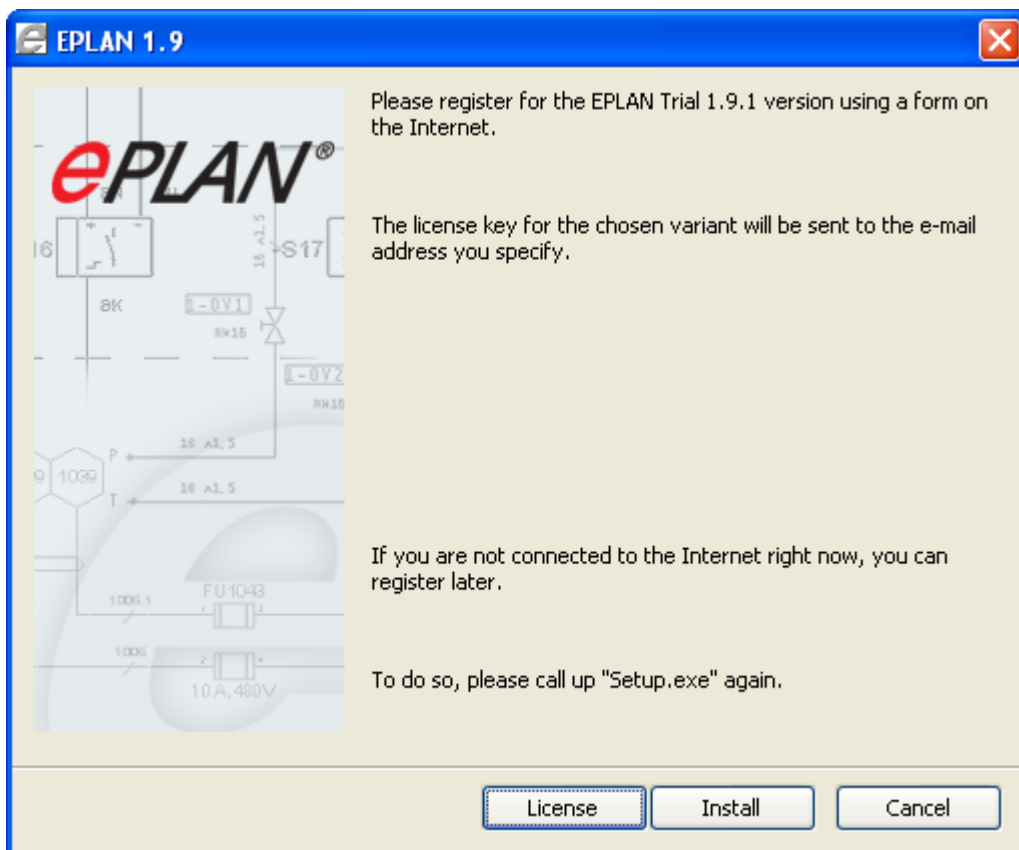
Salutation: Mr. \*  
Title: \*  
First name: \*  
Last name: \*  
Company: \*  
Address: \*  
Postalcode: \*  
City / State: \*  
Country: Select your country \*  
Email: \*  
Email (confirm Email): \*  
Phone No.: \*  
Position: \*  
Branch or Industry: \*  
Number of employees in your company: \*  
Number of employees in engineering: \*  
How did you hear about this trial version? Recommended by a local EPLAN office/distributor \*

© 2002-2008 EPLAN Software & Service.

Soon after this step, a license serial number and a validation code will be emailed to you. After you receive the email, go back to the Installer program to complete the installation. If you closed the Installer program, repeat steps 1, 2 and 3.

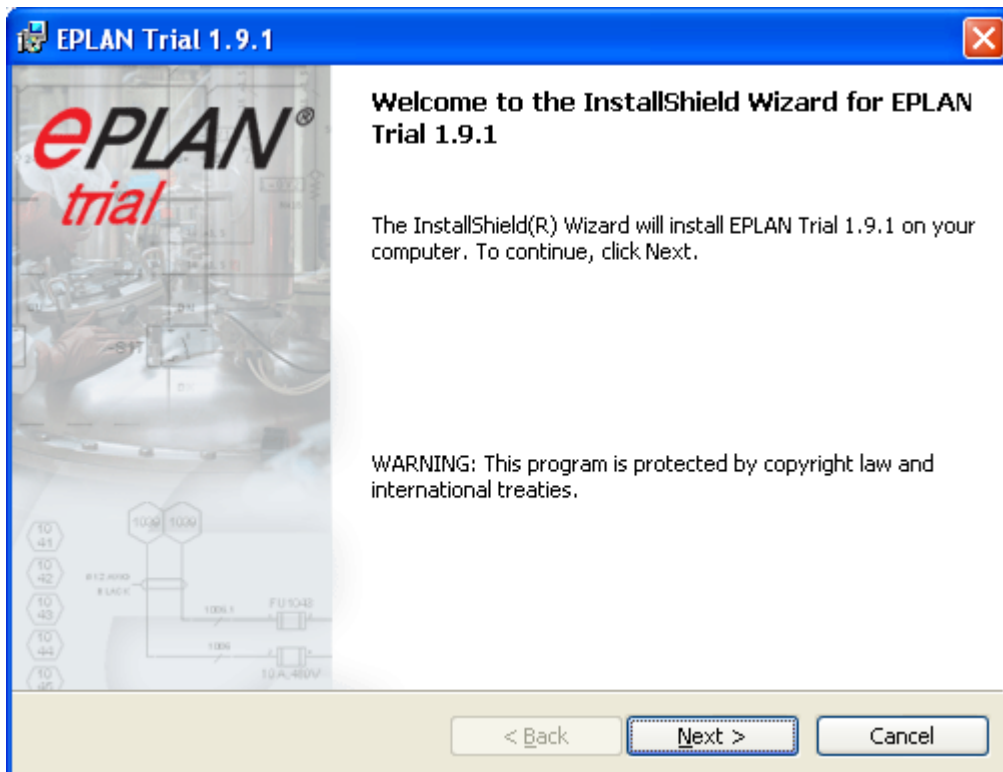


6) Click **Install**.



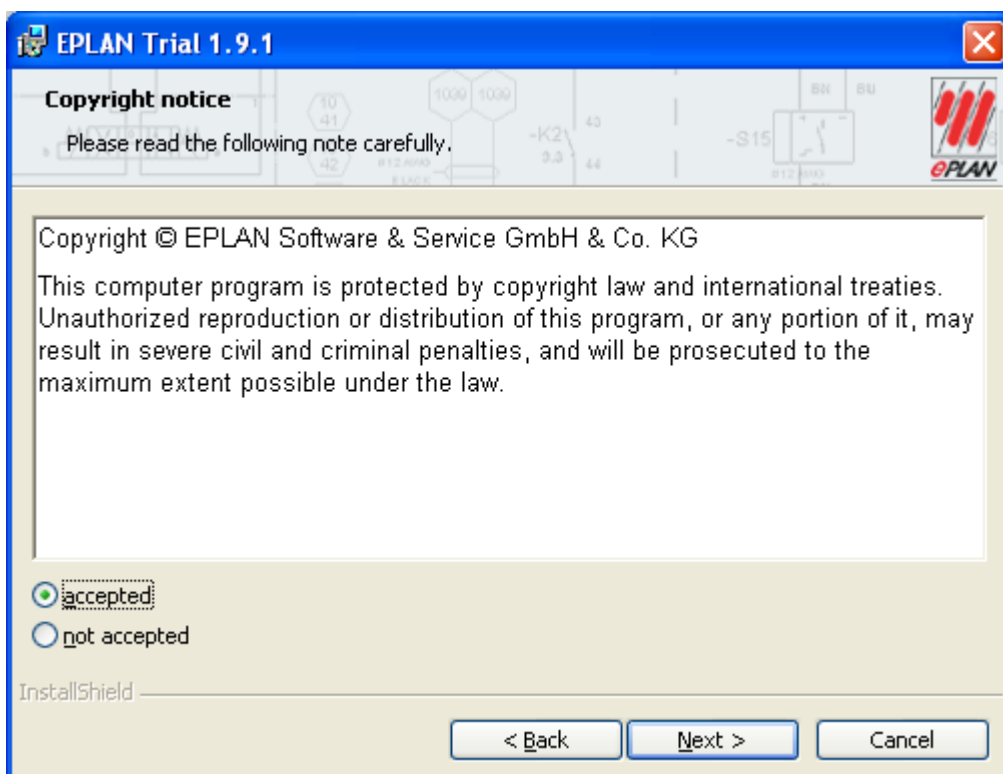


7) Click **Next**.





8) Accept the copyright statement and click **Next**.





- 9) Here you can specify your Company name folder. A short or abbreviated name works best. You can also select if you prefer the **metric** or **inch** master data. When finished, click **Next**.

The dialog box is titled "EPLAN Trial 1.9.1" and "Target Directories, Settings". It contains several input fields and buttons. The "Program directory" is set to "C:\Program Files\EPLAN\Trial\". The "Data directory" is set to "C:\Documents and Settings\All Users\Applica". The "Company code" is "ESSUS". The "User settings", "Workstation settings", and "Company settings" are all set to "C:\Documents and Settings\All Users\Applica". The "Measuring unit" is set to "inch". At the bottom, there are buttons for "Previous version", "Default", "< Back", "Next >", and "Cancel".

**EPLAN Trial 1.9.1**

**Target Directories, Settings**

Select the target directories for program files, configuration files, and master data and determine all required program settings.

Program directory: C:\Program Files\EPLAN\Trial\ Change...

Data directory: C:\Documents and Settings\All Users\Applica Change...

Company code: ESSUS

User settings: C:\Documents and Settings\All Users\Applica Change...

Workstation settings: C:\Documents and Settings\All Users\Applica Change...

Company settings: C:\Documents and Settings\All Users\Applica Change...

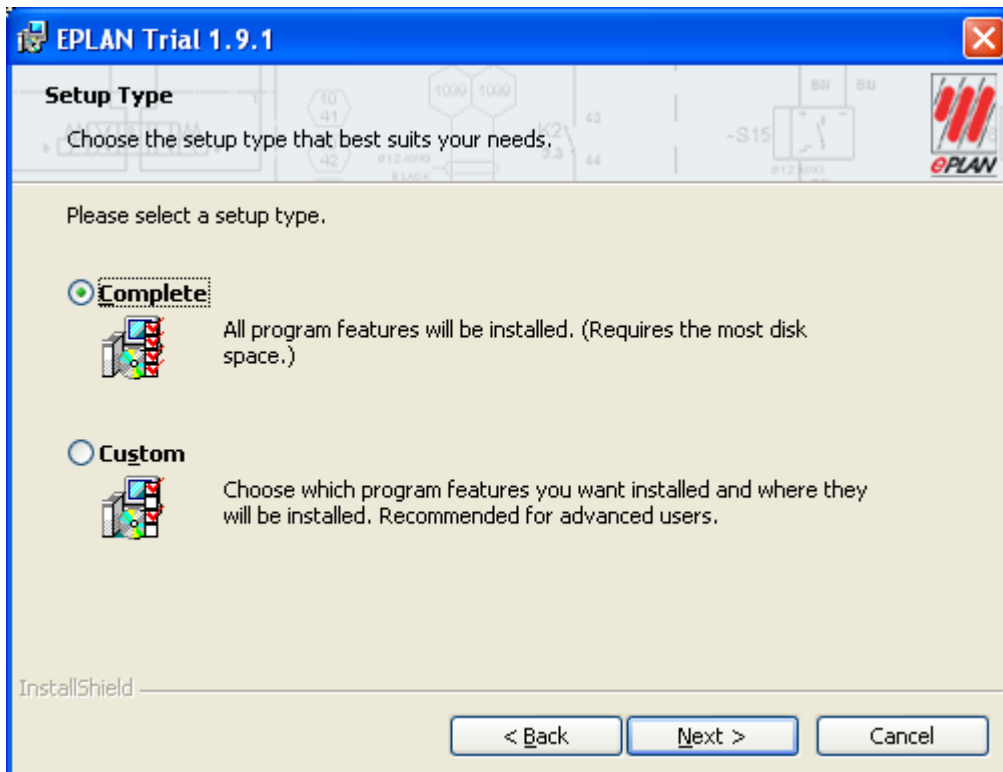
Measuring unit:  mm  inch

InstallShield

Previous version Default < Back Next > Cancel

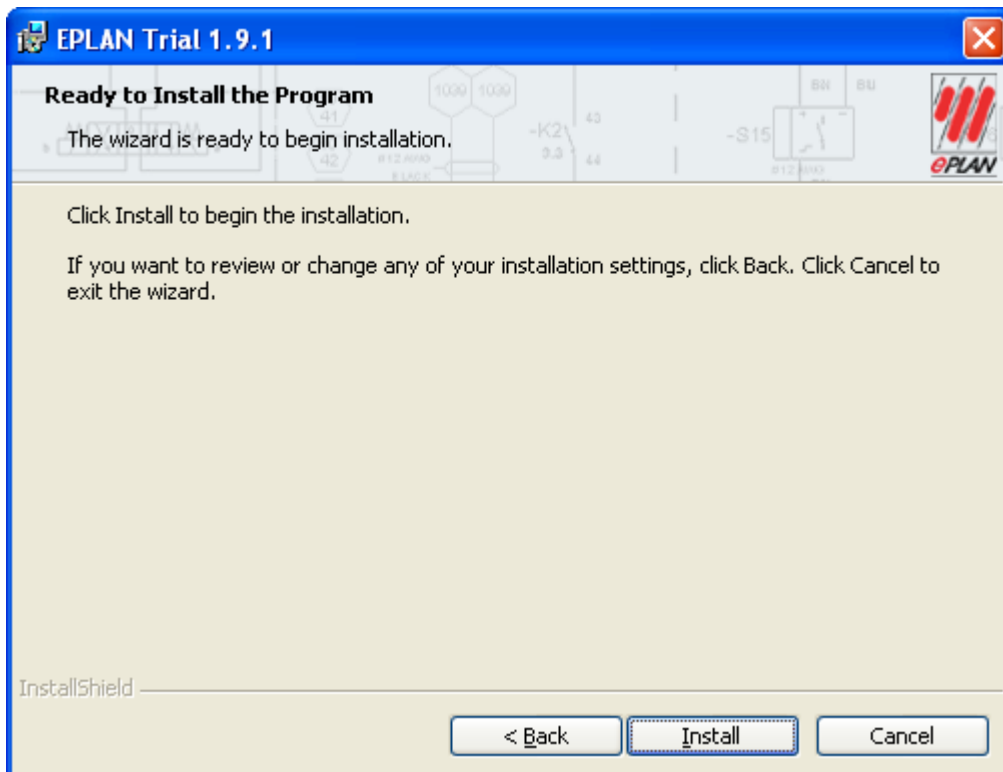


10) Select **Complete** and click **Next**.



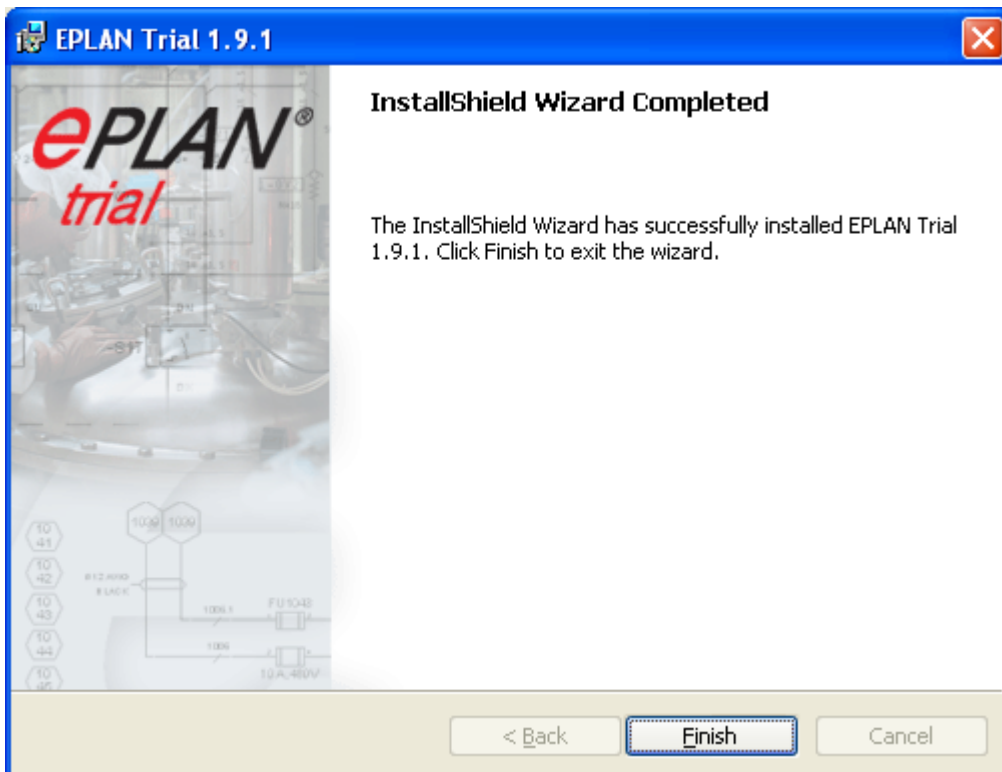


11) Click **Install**.

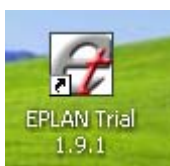




12) Click **Finish**.



13) To open the EPLAN Trial software, double click on the EPLAN Trial 1.9.1 icon on your desktop.

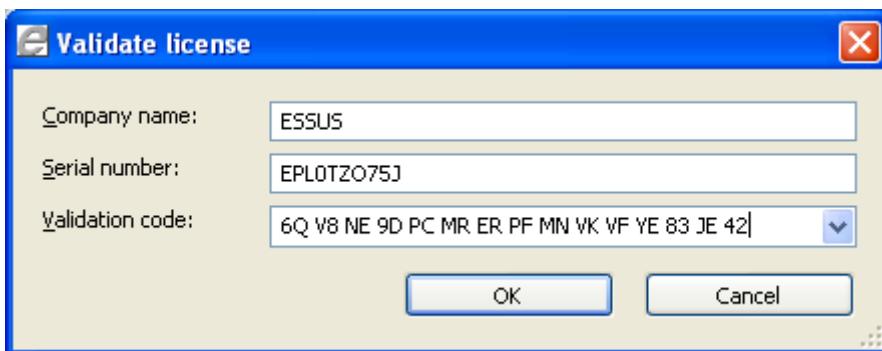




- 14) The first time you open EPLAN you will be required to enter the serial number and validation code you received via email when you registered your license online in Step 5. Select **Use a validation code** and click **OK**.



- 15) Enter or paste the information from the email. Click **OK**.





- 16) Upon successfully entering the information the following screen will appear. The green arrows indicate the features that are available for use. Click **Close**.

The dialog box is titled "Validate license" and contains the following information:

The license has been validated successfully on your computer.  
Back up the license file additionally on a suitable storage medium.

License file:	Settings\All Users\Application Data\EPLAN\Common\SN-TZO75J.EGF
Serial number:	EPL0TZO75J
License expiration date:	7/3/2008
Company name:	ESSUS
Dongle serial number:	No dongle

Systems:

- EPLAN Trial Version

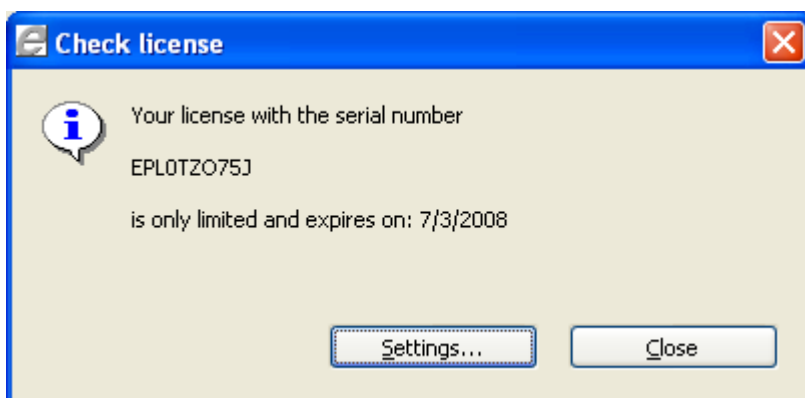
Extensions:

- EPLAN - EPLAN P&ID (Add-On)
- EPLAN - Extended Festo interface
- EPLAN - Pages 10

Buttons: Further ... Close

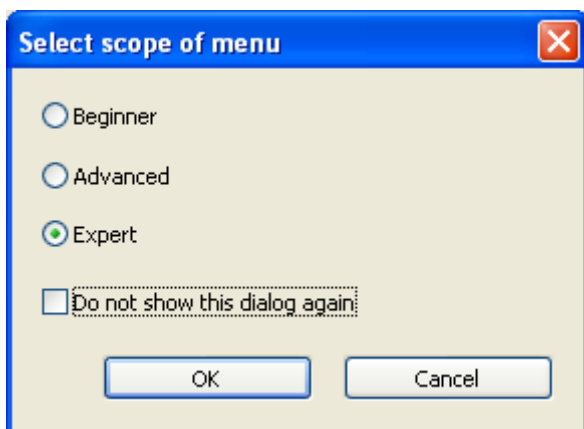


Click **Close**.



**Note:** The 30-day activation period begins on the day the license is registered online, not on the day it is installed.

17) Make your menu selection (The Expert selection will list all available menus) and click **OK**.



You are now ready to begin using EPLAN. Please refer to the Getting Started Guide included in the same email when you received the license serial number and the validation code.